

# SERVICES

The District is a proactive advocate of water pollution prevention at the source, rather than a reactive agency that responds only to problems after they develop.

To this end, programs and activities are focused on increasing and improving the public's knowledge on water quality and water quantity issues. The District strives to:

- ◆ Provide answers to citizens' question related to water issues.
- ◆ Serve as a *clearinghouse* for water resource information.
- ◆ Assist citizens with contacting other agencies and organizations.
- ◆ Foster stewardship and increase public awareness of water resource issues within the District.
- ◆ Establish and maintain a long-term water quality and quantity monitoring network.
- ◆ Partner with local groups, organizations and governmental agencies to create a solid information network on water resource issues.



Marsh wetland near the East Gallatin River north of Bozeman



The West Gallatin River with associated riparian area and floodplain north of Four Corners, Gallatin County, Montana.

*The future stewardship of our surface and ground water is dependent on the Community as a whole...that responsibility begins with each individual.*

## Contact Us

Gallatin Local Water Quality District  
215 W. Mendenhall, Suite 300  
Bozeman, MT 59715

Phone:  
(406) 582-3148

Email:  
alan.english@gallatin.mt.gov  
tammy.crone@gallatin.mt.gov  
erinn.zindt@gallatin.mt.gov

Web Site:  
[www.gallatin.mt.gov/GLWQD](http://www.gallatin.mt.gov/GLWQD)

Updated 2/08/2012

# Gallatin Local Water Quality District



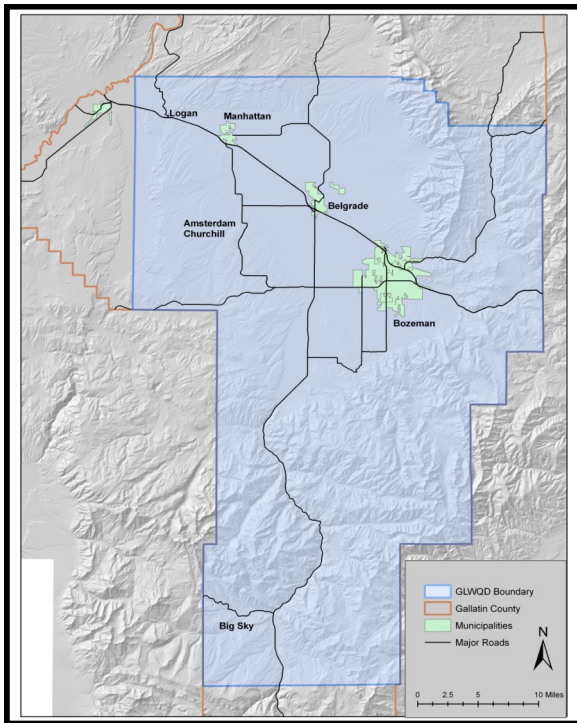
*Working to protect, preserve, and improve the quality of ground water and surface water within the Local Water Quality District.*

# BACKGROUND

The Gallatin Local Water Quality District was created by Resolution No. 1995-55 of the Gallatin County Commission, and approved by the Montana Board of Environmental Review in 1997.

The District operates as a non-regulatory department of Gallatin County. Encompassing 1,299 square miles, the District covers the middle portion of Gallatin County.

## Gallatin Local Water Quality District



Much of the District is contained within the Gallatin watershed. The main water bodies in the watershed include the Gallatin River, East Gallatin River, Bozeman (Sourdough) Creek, and Hyalite Creek.

The municipalities of Belgrade, Bozeman and Manhattan lie within the District including the unincorporated areas of Gallatin Gateway, Four Corners, Logan, Amsterdam, Churchill and Big Sky.

# ORGANIZATION

The District is governed by a nine-member Water Quality District Board of Directors consisting of:

- ◆ City Council members from Belgrade, Bozeman, and Manhattan (3 total)
- ◆ Gallatin County Commissioner
- ◆ Conservation District Board Supervisor
- ◆ Gallatin City-County Board of Health representative
- ◆ Citizen "At-large" representatives from Belgrade, Bozeman, and Manhattan (3 total)

District staff include a Manager, two Water Quality Specialists and Administrative Assistant.

# FOCUS AREAS

## Education –

The District conducts on-going public education to increase awareness and understanding of the importance of protecting and improving water resources within the Gallatin watershed. Participation in educational programs and development of education resources through cooperative involvement with other organizations is a key component of our education efforts.



## Communication –

The District collects, compiles, and disseminates water resource data and information for the benefit of all citizens, organizations, groups and governmental agencies interested in water resources within the District. Water-resource information, resources, databases, contacts and events calendars can be accessed from the District's website: [www.gallatin.mt.gov/GLWQD](http://www.gallatin.mt.gov/GLWQD).



## Monitoring –

Establishment and maintenance of a long-term water quality monitoring network is an ongoing project for the District. This work is conducted to establish baseline data of water resources in the District. Research activities are conducted as needed to complement education and data collection efforts, and assess local water resource issues.