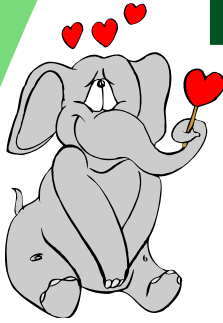




Gallatin County 4-H Leaflet

February 2012



UPCOMING EVENTS

Feb 6	'Neet' Teens camp planning,
Feb 12	4-H Valentines Spa, Belgrade Middle School, 2:00pm-4:00pm
Feb 14	Leaders Council Mtg, Mackenzie River Pizza, Belgrade
Feb 18-19	Wild West WinterFest, Gallatin County Fairgrounds
Feb 29	Dog Obedience/Dog Care, Montana Murray Kennels, 4:45
Mar 16-18	Rec Lab, Lewistown, MT
April 28	Animal Quality Assurance workshop
April 21	Demonstration Day — Belgrade Middle School
Jun 19-22	4-H Summer Camp
July 18-22	Gallatin County Fair, 4-H setup begins July 16th
Sep 28-29	State Leaders Forum — Billings
Sep 28-30	State 4-H Horse Show, Miles City

2012 Rec Lab “100 Years of Green”

2012 Rec Lab will be held at Lewistown on March 16-18th. Rec Lab provides an opportunity for youth and adults to enhance their leadership, communication and team building skills in an action packed, interactive setting. Rec Lab programming is designed to provide participants with tips and tricks for being a better club, camp and community leader. Members must be at least 13 years old as of October 2011. Registrations are now open and available on our website or in the Office. Financial assistance may be available upon request. If you have questions, please feel free to call us at 388-3213. Early Bird Registration Due Feb. 7, regular registration due Feb. 14

Beginning beekeeping workshop offered at MSU

Montana State University will present a beginning beekeeping workshop on Saturday, Feb. 25, 2012. New beekeepers, including youth, can learn how to get started, first year management strategies and integrated pest management of honeybee pests and diseases. Participants will also learn about honeybee biology and beekeeping equipment. The workshop runs from 8:30 a.m. to 4:30 p.m. and takes place at the Plant Bioscience Building room 108 on the MSU campus in Bozeman. The cost is \$20 for adults and \$15 for children 18 and under. Registration is due by Feb. 18 and is limited to 50 people. Send payment made out to Montana Agricultural Experiment Station along with your name, address and phone number to: David Baumbauer, Plant Growth Center, P.O. Box 172060, MSU, Bozeman, MT 59717. Workshop information is available at <http://ag.montana.edu/plantgrowth/> or contact David Baumbauer at (406) 994-2231 or beekeeping@montana.edu.



Teen Meeting: Monday, February 6, 2012, 6:30-8:15pm at the Belgrade Middle School Cafeteria. Camp planning meeting. Questions? Please contact Camp Co-Chairs Beker Cuelho at beker-cuelho@gmail.com or Megan Crawford at powderdog95@gmail.com or the 4-H Office, 388-3213.

Who Stole the Clover?

Come join us for a Mystery Dinner and help us find the 4-H Clover! Treat your family to a fun filled evening of dinner and entertainment! Fun food and mystery can be found at the Lindley Center, Friday, February 10 at 7pm! Tickets will be \$5.00 per person, or maximum of \$25.00 for a family. If possible, pre-purchase your tickets before the dinner through the Extension Office or Kathy 581-8763 dokainc@bresnan.net. This will help with planning the meal. See you February 10!!!

Unlimited Council Meeting

The next Unlimited Council meeting will be February 14 at 6:30 PM at Mackenzie River Pizza in Belgrade. All are welcome to attend!

Public Presentation Day

Start practicing your demonstrations or speeches now. Get experience by giving your club a preview of your demonstration/speech. Demo Day will be held on April 21. Watch for more details.

